



2728

N. Harwood

Space Highlights- Suite 200

- Premise: 15,068 RSF
- Parking: 3 per 1000
- Demountable Walls
- Elevator exposure
- 9'-0" tall floor to ceiling glass windows
- Views to Uptown, Downtown
- Walking distance to AAC, The Ritz Carlton, The Crescent Hotel

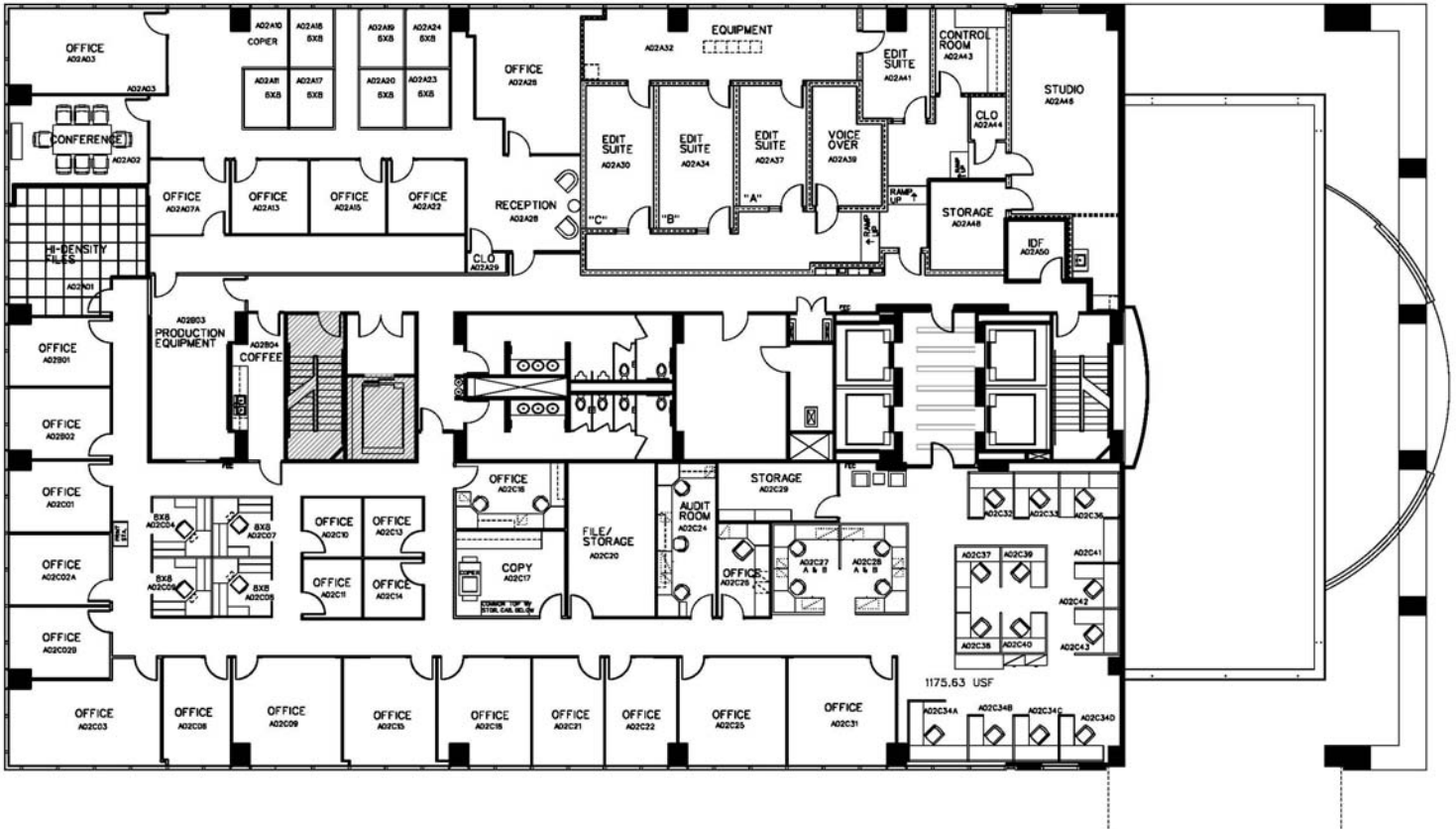


Building Specifications

- Completion 1996
- Offices: 178,384
- Height: 150 FEET
- Floors: 10
- Typical Floor: Lower floor 15,157 Square Feet,
- Upper Floors 20,037 Square Feet
- Parking Ratio: 3:1,000

Amenities

- Class AA
- Winner of EPA's Energy Star "Most Efficient Building in the USA" (1999)
- Located in the heart of Uptown
- Fine dining and casual fare by Marie Gabrielle TM Restaurant & Garden with private catering and reservable conference & party rooms
- 6.5 total acres of public greenspace in the district of Harwood including the 1.5 acre Marie GabrielleTM rooftop gardens with reflecting pool
- On-site ownership and management
- 24-hour controlled building access and security
- Concierge services and 5-star personalized service
- Fully equipped fitness center
- Sundry shop with dry cleaners
- Car wash and detail pick up and delivery service
- Shoe shine service



SECOND FLOOR- 15,068 RSF



2501 North Harwood Suite 1400
Harwood, Dallas TX 75201

www.harwoodinternational.com





HARWOOD

ABOVE ALL ELSE - A BRIGHTER PLACE TO BE

...in one thousand yards



Jihane A. Boury

214. 871 . 0871

jboury@harwoodinc.com

Or

Peter Sleiman

214. 871 . 0871

psleiman@harwoodinc.com



HARWOOD
INTERNATIONAL

2501 North Harwood Suite 1400

Harwood, Dallas TX 75201

www.harwoodinternational.com